

TUDOR HERITAGE BLACK BAY 36



TUDOR









**TUDOR**

TUDOR HERITAGE BLACK BAY 36

## CONTENTS

GENERAL INFORMATION	5
WATERPROOFNESS	7
BLACK BAY 36	8
MAINTENANCE	16
WORLDWIDE SERVICE NETWORK	17





All TUDOR watches are entirely manufactured in Switzerland.

Equipped with a self-winding mechanical movement, they are fitted with a scratch-resistant sapphire crystal and a screw-down winding crown for perfect waterproofness.

To ensure that your watch remains in perfect working order for many years, please read this document carefully.



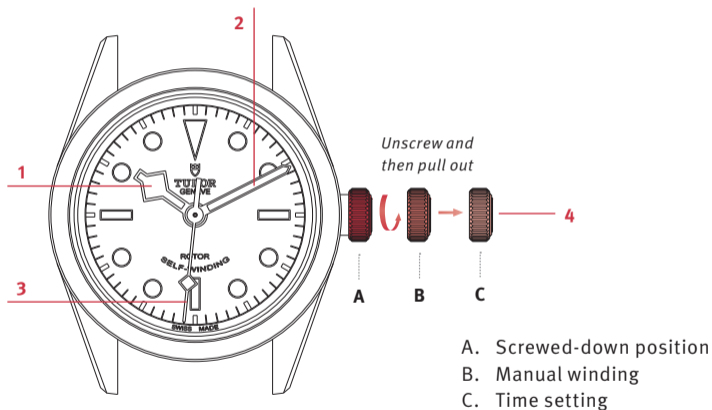
## WATERPROOFNESS

---

TUDOR HERITAGE	50 m	100 m	150 m	200 m	500 m
BLACK BAY 36					
	165 ft	330 ft	500 ft	660 ft	1,640 ft

## BLACK BAY 36

### DISPLAY



Ø 36 mm, TUDOR calibre 2824, waterproof to 150 metres.

**Key**

1. Hour hand
2. Minute hand
3. Seconds hand
4. Winding crown

### **SCREWED-DOWN POSITION (position A)**

Your TUDOR watch is equipped with a screw-down crown. Once this is fully screwed down against the case, your watch is guaranteed waterproof.

### **MANUAL WINDING (position B)**

A watch equipped with a self-winding mechanical movement is wound automatically by wrist movements alone. To ensure optimum winding, wear your watch daily.

Before you first use the watch or if it has stopped, you will need to wind it manually by unscrewing the crown and then turning it clockwise; the other direction is inactive. After performing the operation, gently press in the crown while turning it gradually clockwise, and screw it down carefully against the case in order to preserve your watch's waterproofness.

Once wound, and without being worn, the Black Bay 36 has a power reserve of approximately 38 hours.

### **TIME SETTING (position C)**

In order to adjust the time, unscrew the crown and pull it out to the last notch. Then turn it in either direction until the hands indicate the correct time. The seconds hand is stopped during this operation, allowing the time to be set accurately.

After each operation, remember to push the crown back in and screw it back down carefully against the case, in order to preserve your watch's waterproofness.

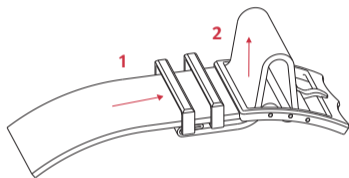


### **ADJUSTING THE FABRIC STRAP**

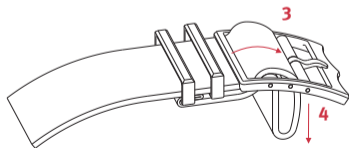
The Black Bay 36 model comes with an additional fabric strap. The length of the fabric strap can be adjusted by sliding it through the buckle and loops.

Only Official TUDOR Retailers are authorized to change the watch strap.

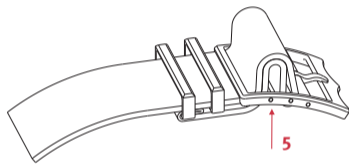
## SHORTENING THE FABRIC STRAP



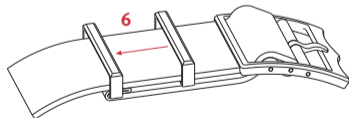
*Feed the upper strap through the buckle*



*Push the strap down and under the buckle*

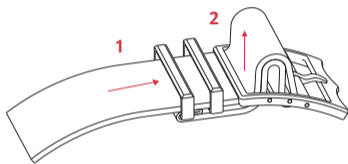


*Push the loop up against the buckle*

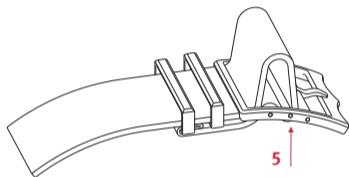


*Pull on both straps*

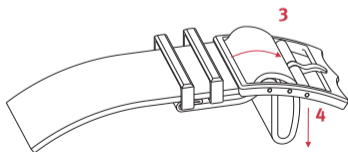
## LENGTHENING THE FABRIC STRAP



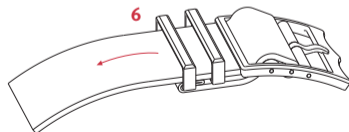
*Feed both straps through the buckle*



*Push only the upper strap up through the buckle.*



*Push the loop down and under the buckle*



*Pull the upper strap*

## MAINTENANCE

---

Thanks to TUDOR's expertise, your watch will require very little day-to-day care.

However, you can maintain the shine on your watch and its metal bracelet by using a microfibre cloth. You can also wash it from time to time using a soft brush and soapy water.

Before performing these operations, check that the crown is properly screwed down against the case, in order to guarantee your watch's waterproofness.

To help preserve your leather or fabric strap, we recommend protecting it from water and moisture.

TUDOR watches are sold only by Official TUDOR Retailers.

Each TUDOR watch is a complex precision mechanism and, as such, requires periodic servicing and maintenance to guarantee optimum performance.

Expert TUDOR servicing can be carried out via any of the Official Retailers and Service Centres in the extensive ROLEX or TUDOR service network. This worldwide network spans five continents and is staffed by highly skilled watchmakers trained to respond to all your service needs.

Please contact your ROLEX Affiliate for an up-to-date list of TUDOR Official Retailers and Service Centres for your region.











**TUDOR**

