


TUDOR



TUDOR HERITAGE BLACK BAY


TUDOR





TUDOR

TUDOR HERITAGE BLACK BAY

CONTENTS

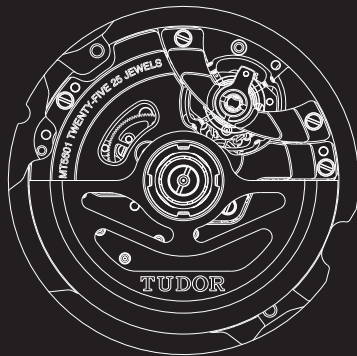
GENERAL INFORMATION	5
MOVEMENT	6
WATERPROOFNESS	9
BLACK BAY	10
MAINTENANCE	20
WORLDWIDE SERVICE NETWORK	22



All TUDOR watches are entirely manufactured in Switzerland.

Equipped with a self-winding mechanical movement, they are fitted with a scratch-resistant sapphire crystal and a screw-down winding crown for perfect waterproofness.

To ensure that your watch remains in perfect working order for many years, please read this document carefully.



Your TUDOR watch features a self-winding mechanical movement manufactured exclusively by TUDOR.

Its power reserve of approximately 70 hours means that its wearer can, for example, take off the watch on Friday evening and put it on again on Monday morning without having to wind it.

At the cutting-edge of watchmaking technology, its silicon balance spring ensures superb precision, as certified by the Swiss Official Chronometer Testing Institute (COSC).

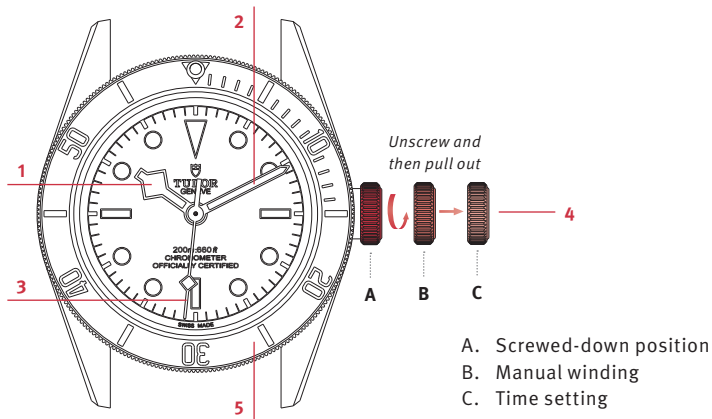


WATERPROOFNESS

TUDOR HERITAGE	50 m	100 m	150 m	200 m	500 m
BLACK BAY	165 ft	330 ft	500 ft	660 ft	1,640 ft

BLACK BAY

DISPLAY



BLACK BAY BRONZE: Ø 43 mm, calibre MT5601,
Manufacture TUDOR, waterproof to 200 metres.

BLACK BAY & BLACK BAY DARK: Ø 41 mm, calibre MT5602,
Manufacture TUDOR, waterproof to 200 metres.

Key

1. Hour hand
2. Minute hand
3. Seconds hand
4. Winding crown
5. Unidirectional rotatable bezel

SCREWED-DOWN POSITION (position A)

Your TUDOR watch is equipped with a screw-down crown. Once this is fully screwed down against the case, your watch is guaranteed waterproof.

MANUAL WINDING (position B)

A watch equipped with a self-winding mechanical movement is wound automatically by wrist movements alone. To ensure optimum winding, wear your watch daily.

Before you first use the watch or if it has stopped, you will need to wind it manually by unscrewing the crown and then turning it clockwise; the other direction is inactive. After performing the operation, gently press in the crown while turning it gradually clockwise, and screw it down carefully against the case in order to preserve your watch's waterproofness.

Once wound, and without being worn, the Black Bay has a power reserve of approximately 70 hours.

TIME SETTING (position C)

In order to adjust the time, unscrew the crown and pull it out to the last notch. Then turn it in either direction until the hands indicate the correct time. The seconds hand is stopped during this operation, allowing the time to be set accurately.

After each operation, remember to push the crown back in and screw it back down carefully against the case, in order to preserve your watch's waterproofness.

BEZEL FUNCTION

The unidirectional rotatable bezel allows precise measurement of dive times. For safety, the bezel rotates in one direction only.

The bezel has 60 positions. It is deliberately harder to turn when the zero marker (triangle) is in the 12 o'clock position to avoid inadvertent rotation.

For enhanced legibility during dives, the capsule at the zero marker on the bezel as well as the hands and hour markers on the dial are filled with luminescent material.

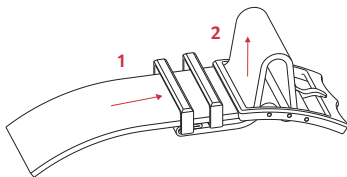
BLACK BAY

ADJUSTING THE FABRIC STRAP

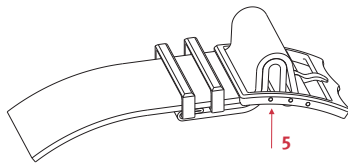
The Black Bay model comes with an additional fabric strap. The length of the fabric strap can be adjusted by sliding it through the buckle and loops.

Only Official TUDOR Retailers are authorized to change the watch strap.

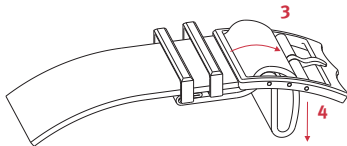
SHORTENING THE FABRIC STRAP



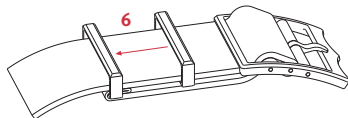
Feed the upper strap through the buckle



Push the loop up against the buckle

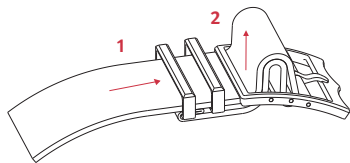


Push the strap down and under the buckle

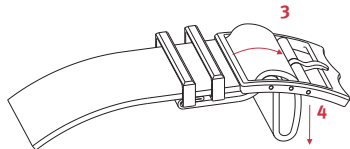


Pull on both straps

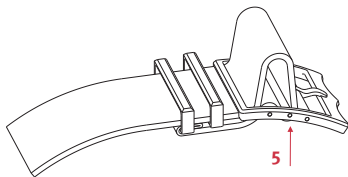
LENGTHENING THE FABRIC STRAP



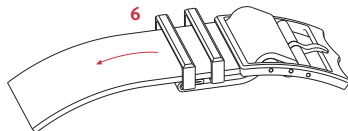
Feed both straps through the buckle



Push the loop down and under the buckle



Push only the upper strap up through the buckle



Pull the upper strap

MAINTENANCE

Thanks to TUDOR's expertise, your watch will require very little day-to-day care.

However, you can maintain the shine on your watch and its metal bracelet by using a microfibre cloth. You can also wash it from time to time using a soft brush and soapy water.

Before performing these operations, check that the crown is properly screwed down against the case, in order to guarantee your watch's waterproofness.

To help preserve your leather or fabric strap, we recommend protecting it from water and moisture.

PVD AND BRONZE

Your Black Bay Dark is finished with a black coating obtained using a Physical Vapour Deposition (PVD) process. Although the coating is extremely resistant, regular wear and tear can cause this decorative layer to deteriorate over time. The warranty does not cover this type of aesthetic wear.

Your Black Bay Bronze is designed in bronze, in this case a high-performance aluminium bronze alloy, which guarantees the development of a subtle and unique patina to match its user's habits.

We recommend that you do not use abrasive or corrosive products.

WORLDWIDE SERVICE NETWORK

TUDOR watches are sold only by Official TUDOR Retailers.

Each TUDOR watch is a complex precision mechanism and, as such, requires periodic servicing and maintenance to guarantee optimum performance.

Expert TUDOR servicing can be carried out via any of the Official Retailers and Service Centres in the extensive ROLEX or TUDOR service network. This worldwide network spans five continents and is staffed by highly skilled watchmakers trained to respond to all your service needs.

Please contact your ROLEX Affiliate for an up-to-date list of TUDOR Official Retailers and Service Centres for your region.

TUDORWATCH.COM





TUDOR

